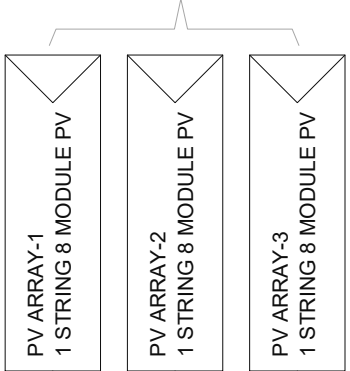


FRAME, (- SET PV ARRAY)
550 Wp, 60Volt PER MODULE
(13500 Wp)

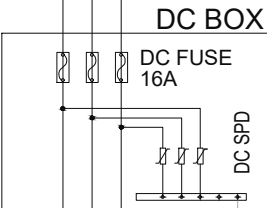


KETERANGAN :

 = MODUL SOLAR PANEL 550 Wp

TOTAL SUPPLAY POWER SOLAR PANEL

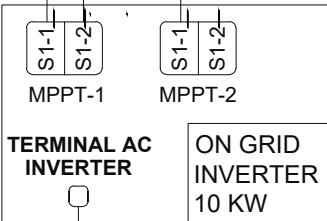
FRAME
1 MODUL = 550 Wp
1 ARRAY = 8 MODUL
= 8 x 550Wp = 4.400 Wp
1 FRAME = 3 ARRAY (24 MODUL)
= 3 x 4.400Wp = 13.200 Wp
TOTAL = 13 KWp



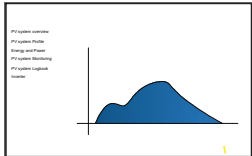
2x6 mm2 DOUBLE INSULATED UV
RESISTANT CABLE

SENSING TO MCPFA
FRC 2x 1,5 mm2

FIRE MITIGATION
SYSTEM

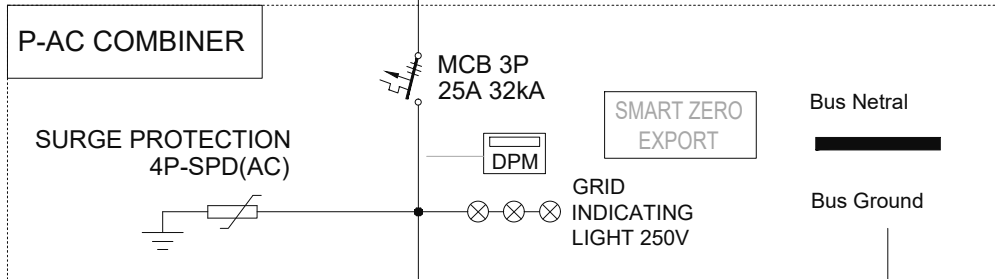


DISPLAY PV MONITOR
DI RUANG ENGINEERING



CLUSTER
CONTROLLER

0,6/1KV, NYY-HY
1X4CX6 mm2+ NYA 6 mm2



0,6/1KV, NYY 4Cx6mm2

BY SPESIAL SOLAR PV

BC 6 mm2

MDP-KANTOR



APPROVED : .../.../...

(signed) (name)
..... (position)
..... (Dep./Div.)

BPDP
KELAPA SAWIT

JL.Medan Merdeka Tim, RT.7/RW.1, Gambir,
Kec. Gambir, Kota Jakarta Pusat, Daerah
Khusus Ibukota Jakarta 10110





INTERIOR DESIGN CONSULTANT
PT. MADEA AGKASAMA
Jl. Hati Suci No. 4 Gd. Sakura Lt. 2 Room 201
Kel. Kampung Bali, Kec. Tanah Abang, Jakarta Pusat
Telp. 021 - 2303483 , Fax. 021 - 2303483
APPROVED : //

MEP CONSULTANT
PT. DUTA PRATAMA ENGINEERING
MECHANICAL & ELECTRICAL ENGINEER
Rukan Taman Meruya Blok M No. 37, J. Batu Mulia No. 1
Meruya Utara Kembangan - Jakarta Barat 11620
Phone : 021-5845546, 5845547, 5845556, Fax : 021-58474531
Email : dppt.me@gmail.com, pt.dpa.me@yahoo.com

DRAWING TITLE
DIAGRAM SATU GARIS
SISTEM SOLAR PANEL

SCALE : NTS

ALL MEASUREMENT MUST BE CHECKED AT BY SITE
BY THE CONTRACTORS AND ANY DIFFERENCES
REPORTED/INITIATED TO THE DESIGNER FOR
CLARIFICATION BEFORE PROCEEDING.

		.../.../...
		.../.../...
		.../.../...
		.../.../...
		.../.../...
#	REVISION :	DATE

DRAWN Sangaji DATE : 15/05/24	DRAWING NUMBER EL-103
CHECKED Jefri DATE : 15/05/24	PAGE
DRAWING FOR	DATE : 2024/05/10
TENDER	